

RENE ROMERO SCHULER

CATALOGUE







RENE ROMERO SCHULER

Est Née en 1968 à Chicago (USA). Elle vit et travaille à Carmel. (USA)

René Romero Schuler is an American painter and sculptor who creates powerful images that speak to the complexities of the human condition and the spirit that connects all human beings.

Feminine figures are a constant in Schuler’s art, which she claims is equal parts self-portraiture and depictions of the range of emotions she has experienced. Her challenging childhood imbues her work with an appreciation for the universal yet essentially intimate struggles and triumphs of human existence. In her quest for a feeling of connection, Schuler speaks to global and societal issues that impact us all.

Schuler’s paintings and sculptures are purposely semi-abstract and textured, rendering them open to interpretation by the viewer. Their power lies in the layers of applied materials scraped, carved and incised by hand and the elusive quality of the figures – wholistically beautiful but symbolic of the scars and flaws that shape individuals.

Currently represented by galleries across the U.S. and Europe, Schuler has had exhibitions throughout the U.S. and in Paris, Rome, Paxos, Singapore and Beirut. Her work is included in the permanent collections of The Union League Club of Chicago, Loyola University Museum of Art (LUMA) in Chicago, Grand Valley State University in Michigan, Coral Springs Museum of Art and St. Thomas University Museum of Art – Sardiñas Gallery in Miami.

Schuler’s art and selected essays and poetry are collected into published works: René Romero Schuler: Life and Works, 2013; René Romero Schuler, 2016 and René Romero Schuler, 2019. A fourth book, Ladies, is scheduled for publication in 2022.

RENE ROMERO SCHULER

Was born in 1968 in Chicago (USA). Leaves and works in Carmel. (USA)

René Romero Schuler est une peintre et sculpteur américain qui crée des images puissantes évoquant la complexité de la condition humaine et l’esprit qui relie tous les êtres humains.

Les figures féminines sont une constante dans l’art de Schuler, qui, selon elle, est à la fois un autoportrait et une représentation de la gamme d’émotions qu’elle a vécues. Son enfance difficile confère à son œuvre une appréciation des luttes et des triomphes universels mais essentiellement intimes de l’existence humaine. Dans sa quête d’un sentiment de connexion, Schuler aborde des questions mondiales et sociétales qui nous touchent tous.

Les peintures et les sculptures de Schuler sont délibérément semi-abstraites et texturées, ce qui les rend ouvertes à l’interprétation du spectateur. Leur puissance réside dans les couches de matériaux appliqués, grattés, sculptés et incisés à la main, et dans la qualité insaisissable des figures - globalement belles mais symbolisant les cicatrices et les défauts qui façonnent les individus.

Actuellement représentée par des galeries à travers les États-Unis et l’Europe, Schuler a eu des expositions à travers les États-Unis et à Paris, Rome, Paxos, Singapour et Beyrouth. Ses œuvres figurent dans les collections permanentes de l’Union League Club de Chicago, du Loyola University Museum of Art (LUMA) de Chicago, de la Grand Valley State University du Michigan, du Coral Springs Museum of Art et du St. Thomas University Museum of Art - Sardiñas Gallery de Miami.

Les œuvres d’art de Schuler ainsi qu’une sélection d’essais et de poèmes sont rassemblés dans des ouvrages publiés : René Romero Schuler : Life and Works, 2013 ; René Romero Schuler, 2016 et René Romero Schuler, 2019. Un quatrième livre, Ladies, devrait être publié en 2022.

PERMANENT PUBLIC AND MUSEUM COLLECTIONS

- |   |   |
|---|---|
| Grand Valley State University, Allendale, MI        | Hard Rock International, Orlando, FL                            |
| Coral Springs Museum of Art, Coral Springs, FL      | Gensler   Chicago, IL   |
| Loyola University Museum of Art (LUMA), Chicago, IL | Hyatt Regency Chicago, Wacker Drive   Chicago, IL               |
| St. Thomas University Museum of Art,                | Neiman Marcus Group, Michigan Avenue   Chicago, IL              |
| Sardiñas Gallery, Miami Gardens, FL                 | Prudential Building, Lobby, Chicago, IL                         |
| The Union League Club of Chicago, Chicago, IL       | Chicago Children’s Choir, Chicago Cultural Center   Chicago, IL |
| Logitech, Newark, CA                                | Lake Forest Public School District 67, Lake Forest, IL          |
| Magdalena Med Spa,Lake Forest, IL                   | Briarwood Country Club, Deerfield, IL                           |
| Ferrari, Lake Bluff, IL                             | Terlato Family Vineyards, Napa Valley, CA                       |
| The St. Jane   Chicago, IL                          | NuHaus   Chicago, IL  |
|   | 9 West Walton/JDL, Chicago, IL                                  |

SOLO EXHIBITIONS

- «About A Girl», MAC Fine Art - Del Ray Beach, FL - June 10-July 8, 2022
- «Reflection» , Zolla/Lieberman Gallery, Chicago, IL - May 20-August 6, 2022
- «My Heart Holds A Universe» Grogan Gallery - Houston, TX - February 4-March 8, 2022
- «Me and My Girls» - Karen Anderer Fine Art - Lancaster, PA - July 15-August 30, 2021
- «Every Picture Tells A Story» - Rice Polak Gallery | Provincetown,MA - August 5-19, 2021
- River North Design District Gallery Walk - Zolla/Lieberman Gallery, Chicago, IL - September 10-October 11, 2021
- «The Ladies» Miller Gallery - Cincinnati, OH - September 30-October 31, 2021
- «Feeling All Aglow» - The Gallery | Lake Forest, IL - October 6-December 31, 2021
- Interieurs Feminins - Galerie Géraldine Banier, Paris, France - June 4-September 1, 2020
- «Welcome to Serenity» Lululemon – Lake Forest, IL – March 15, 2019
- «All That Glitters is Gold» Monica Graham Fine Art – Seattle, WA – March 9, 2019
- «René Romero Schuler: A Collection of Small Works» Monica Graham Fine Art – Seattle, WA – November 30, 2018
- «The Stories We Tell Ourselves» Monica Graham Fine Art – Carmel Valley, CA – October 25, 2018
- “In Search of Ground” Zolla/Lieberman Gallery – Chicago, IL – September 7-October 20, 2018
- «Haven» Chicago Luxury Beds – Chicago, IL – September 7 – October 9, 2018
- “Au-delà de la Surface” Galeries Du Diamant – Paris, France – July-October 2017
- “Miroir de Vie” Galerie Agathe de Kergos – Paris, France – May-July 2017
- “Everyone and No One” MAC Fine Art – Fort Lauderdale, FL – April/May 2016
- “Presenze” ArtRom Gallery – Rome, Italy – March-June 2016
- “Identity” Zolla/Lieberman Gallery – Chicago, IL – January/February 2016
- “Paper Dolls” Works On Paper by René Romero Schuler Co-Curated by Jennifer Norback, Cecilia Lanyon, and Kristin Mikrut at Re-Invent Gallery – May/June 2015
- “Chosen” New Works by René Romero Schuler Jennifer Norback Fine Art – Chicago, IL – September 2014
- “Cameo” Curated by Jennifer Norback-Chimney Rock – Winery Napa, CA – May 1-November 15, 2014
- “René Romero Schuler” St. Thomas University-Sardinas Gallery – Miami Gardens, FL – April 2014
- “René Romero Schuler” Orland Park Public Library – Orland Park, IL – January 2014
- “Shadows” Jennifer Norback Fine Art – Chicago, IL – October 2011
- “Paintings” Jennifer Norback Fine Art – Chicago, IL – January 2011
- “Figurative Abstraction” Vignette Gallery – Winnetka, IL – May 2008
- “Behind Blue Eyes” ARC Gallery – Chicago, IL – September 2007



GROUP SHOWS

Art Miami - Zolla/Lieberman Gallery - December 2021  
Silhouettes - Galerie Géraldine Banier - Paris -September 9-November 11, 2021  
I'm Making Lemonade - The Gallery - Lake Forest - November 4 to December 31, 2020  
Making Waves - Rice Polak Gallery - Provincetown - October 17 to November 3, 2020  
Balancing Act - Cityfolk Gallery - Cincinnati - November 21 to December 31, 2020  
Face to Face - Zolla/Lieberman Gallery - Chicago - June 3 to October 17, 2020  
Art Wynnwood - MAC Fine Art - February 2020  
Palm Beach Modern + Contemporary - Zolla/Lieberman Gallery - January 2020  
Art Miami | Zolla/Lieberman Gallery - December 2019  
Opening Group Show – Rice Polak Gallery – Provincetown, MA – April 27, 2019  
Art Miami Art Fair – Zolla/Lieberman Gallery – December 2018  
EXPO Chicago – Zolla/Lieberman Gallery – September 2018  
“Women In Art” – MAC Galleries – Ft.Lauderdale, FL – March 2018  
“Innate Beauty” René Romero Schuler and Sara Conca – MAC Galleries – Jupiter, FL – February 2018  
“Year of the Woman” – Monterey Museum of Art – Monterey, CA – February 2018  
Art Miami Art Fair – Zolla/Lieberman Gallery – December 2017  
EXPO Chicago – Zolla/Lieberman Gallery – September 2017  
“Chevere” – Sirona Fine Art – Hallendale Beach, FL – Dec 2016-Feb 2017  
Red Dot Art Fair – MAC Fine Art – December 2016  
EXPO Chicago – Zolla/Lieberman Gallery – September 2016  
“Presenze”, curated by Elizabeth Genovesi – ARTROM Network – Rome, Italy – March-May 2016  
Red Dot Art Fair – MAC Fine Art – December 2016  
Art Miami Art Fair – Zolla/Lieberman – December 2015  
Red Dot Art Fair – MAC Fine Art – December 2015  
EXPO Chicago – Zolla/Lieberman – September 2015  
Zolla/Lieberman Gallery – Chicago, IL – June 2015  
Red Dot Art Fair – MAC Fine Art – December 2014  
Red Dot Art Fair – MAC Fine Art – December 2013  
“Chicago In Paris” – Galerie Boicos – Paris, France – June-July 2013  
“Beholding Beauty” – ArtRom Gallery – Rome, Italy – April-June 2013  
“Body & Soul” – Jennifer Norback Fine Art – Chicago, IL – Dec/Jan 2012-13  
“MAC Artists” – MAC Fine Art – Miami, FL – November/December 2012  
Rich Timmons Gallery – Doylestown, PA – June-December 2012  
Galerie Beckel Odille Boicos – Paris, France – January-June 2011  
Artbox Indy – Indianapolis, IN – 2011  
“During Art Basel Miami” – MAC Fine Art, Miami, FL – November/December 2011  
“Art Is Figurative” – Deerpath Gallery – Lake Forest, IL – Aug-Nov 2011  
“Art Is Abstract” – Deerpath Gallery – Lake Forest, IL – July 2011  
“Female” – The Mush Room – Chicago, IL – July/Aug 2011  
“Inspirations” – ArtFutura – Chicago, IL – June 2011  
“The Grand Opening” – Hammer Chicago – Chicago, IL – July 2011  
State Street Salvage – Chicago, IL – 2011  
Art Chicago – Klein Artist Works – Chicago, IL – May 2011  
“Big Women; Small Works” – PortageArt Space – Chicago, IL – March 2011  
“The Paul Show” – Charnel House – Chicago, IL – February 2011  
Renaissance Society – Chicago, IL – Auction Donation – 2010  
Packer Schopf Gallery – Chicago, IL – Group Exhibition – October 2010  
Onessimo Fine Art – Palm Bch, FL – Representation – 2009  
Seed Gallery/Studio – Elk Rapids, MI – Group Exhibition – 2009  
Chicago Art Open – Chicago Group Exhibition – 2008  
Artropolis – The Artist Project – Chicago Group Exhibition – 2008  
“Chicago Art Open” – Chicago, IL – Group Exhibition – November 2007

BOOK REVIEWS

Chicago Artist’s Visceral Sculptural Sense

Review of the book “René Romero Schuler: Paintings and Sculpture (2016)

by Richard Siegesmund

Whether working 2-dimensionally in paint or fabricating 3-dimensionally, René Romero Schuler is a sculptor. In her work, there is a visceral sense of material scraped, carved, and incised by hand. Her painting largely eschews brushes and is constructed with trowels and knives. Her sculpture—composed in a variety of media such as tightly wound coils of wire or in cast bronze that retains the inscribed trace of thumbs that have probed clay—contains an energy of the hand in pursuit of form.

Schuler is a self-educated artist and therefore lacks formal academic training. Artists so classified are generally associated with outsider art: artists who work beyond immediately acceptable formal definitions of style or artworld conceptions of proper practice. However, Schuler’s work does not fit into these categories, for her work is not naïve. She is an autodidact. In particular, she has paid close attention to Bay Area figuration.

In the early 1960’s when the formal Abstract Expression of Clement Greenberg dominated painterly discourse in the New York centered art world, the painters in the San Francisco Bay Area began to champion an unapologetic return to the figure. This was often achieved with a bravura application of paint to canvas, evidencing the human struggle to shape form through mass and color was evident. This kind of painting was best exemplified in the work of David Park, but others of influence in this scene included Elmer Bischoff, James Weeks, Richard Diebenkorn, Joan Brown,

Chandrika, 2015, oil on canvas, 48 x 48 in.



and Nathan Oliveira.

While one can see the influence of David Park’s dense handling of the materiality of paint in Schuler’s work, it is Nathan Oliveira’s influence the most readily jumps to mind. In particular, it is Oliveira’s ability to capture, with his heavy use of impasto, the delicacy of the Mediterranean-like light and atmosphere for which the Bay Area is famous. This appears to be a powerful influence on Schuler as exemplified in her 2015 work “Carino.” It is not surprising, that Schuler spends time away from Chicago in the fragile Pacific luminance of Carmel, California.

As noted in the catalogue essay by Elizabeth K. Whiting, next to Oliveira, Schuler is clearly influenced by the Swiss modernist Alberto Giacometti. In her elongated figures she evokes the shimmering phenomenological presences of personality. What perhaps makes her works distinctive, and moves them beyond echoing these previous artists, is her ability to pair her painting with sculpture.

Although her sculptures are modest in scale, generally ranging between 12” to 36” in height, (see the work “Tally”). However, these works contain a concrete specificity of form that render the accompanying paintings— that tend to range in height from 48” to 60”—as evocative shadows cast by the smaller sculptures (refer to web site, *reneschuler.com* to see these gallery installations). This further accentuates the performance of light within the two dimensional works. Thus, the ways she installs her work becomes critical to a full understanding of her artistic vision. While the painterly glow of Schuler’s use of color attracts initial attention to her work, it is the visceral sculptural sense of form and the play of space, best represented in her three-dimensional work, that demonstrate the distinctiveness of her voice. ■

Richard Siegesmund is Professor of Art+Design Education at Northern Illinois University. He has received individual fellowship awards from the National Endowment for the Arts, the Getty Trust, and has served as a Senior Fulbright Scholar.





Vue de l'exposition à la Galerie





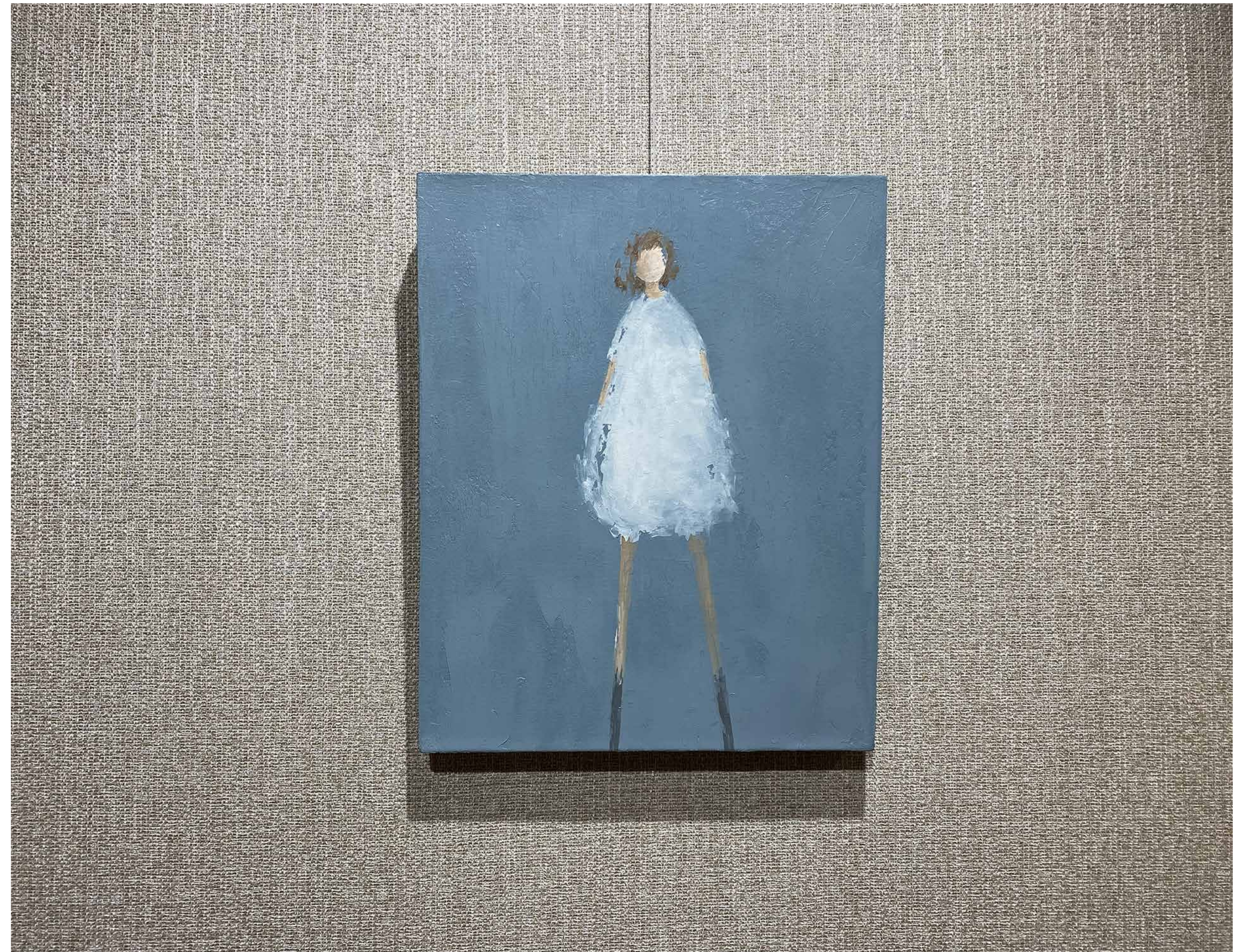
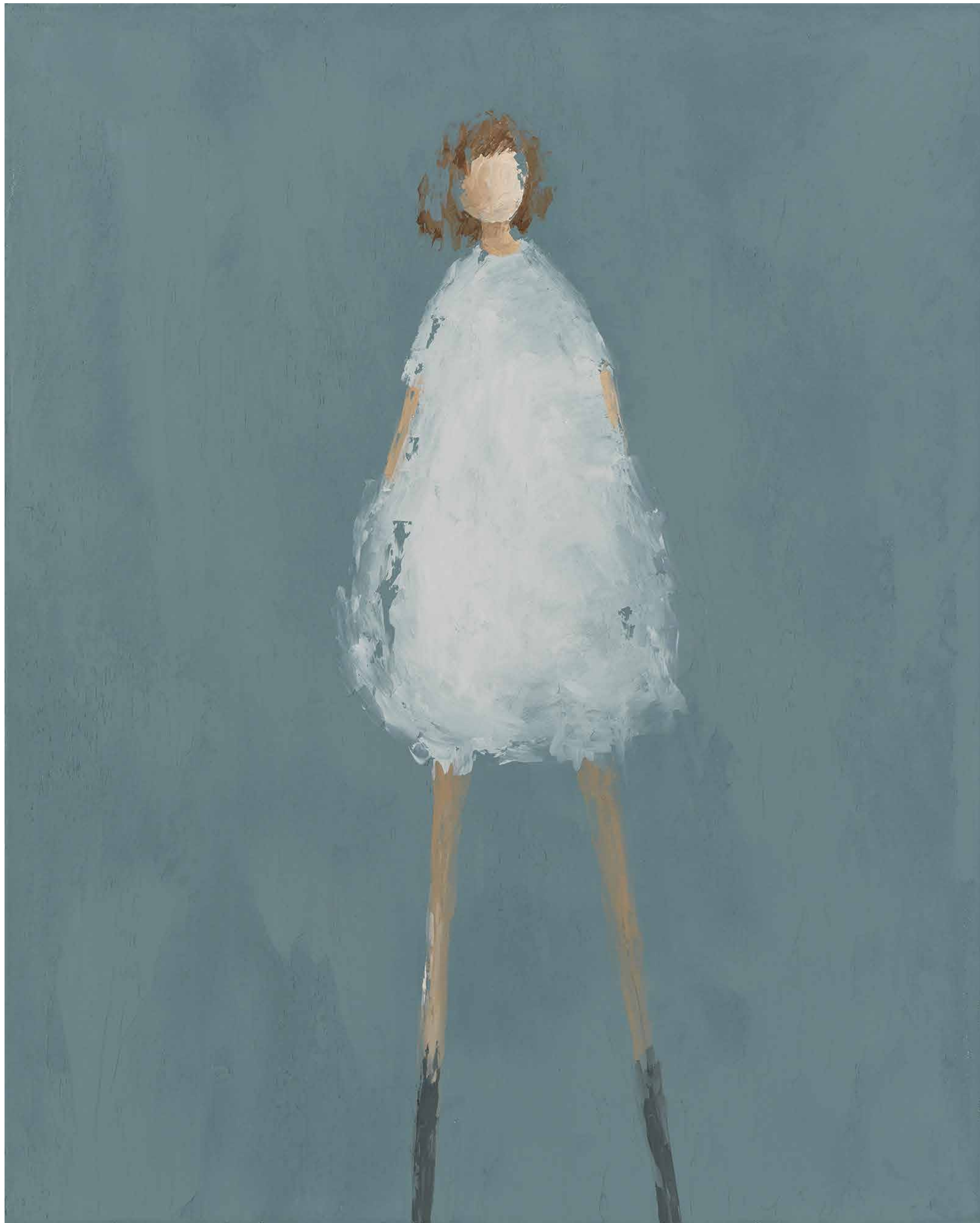
ALPHEN - 2022  
40 x 30 in - 101.6 x 76.2 cm  
Oil Painting





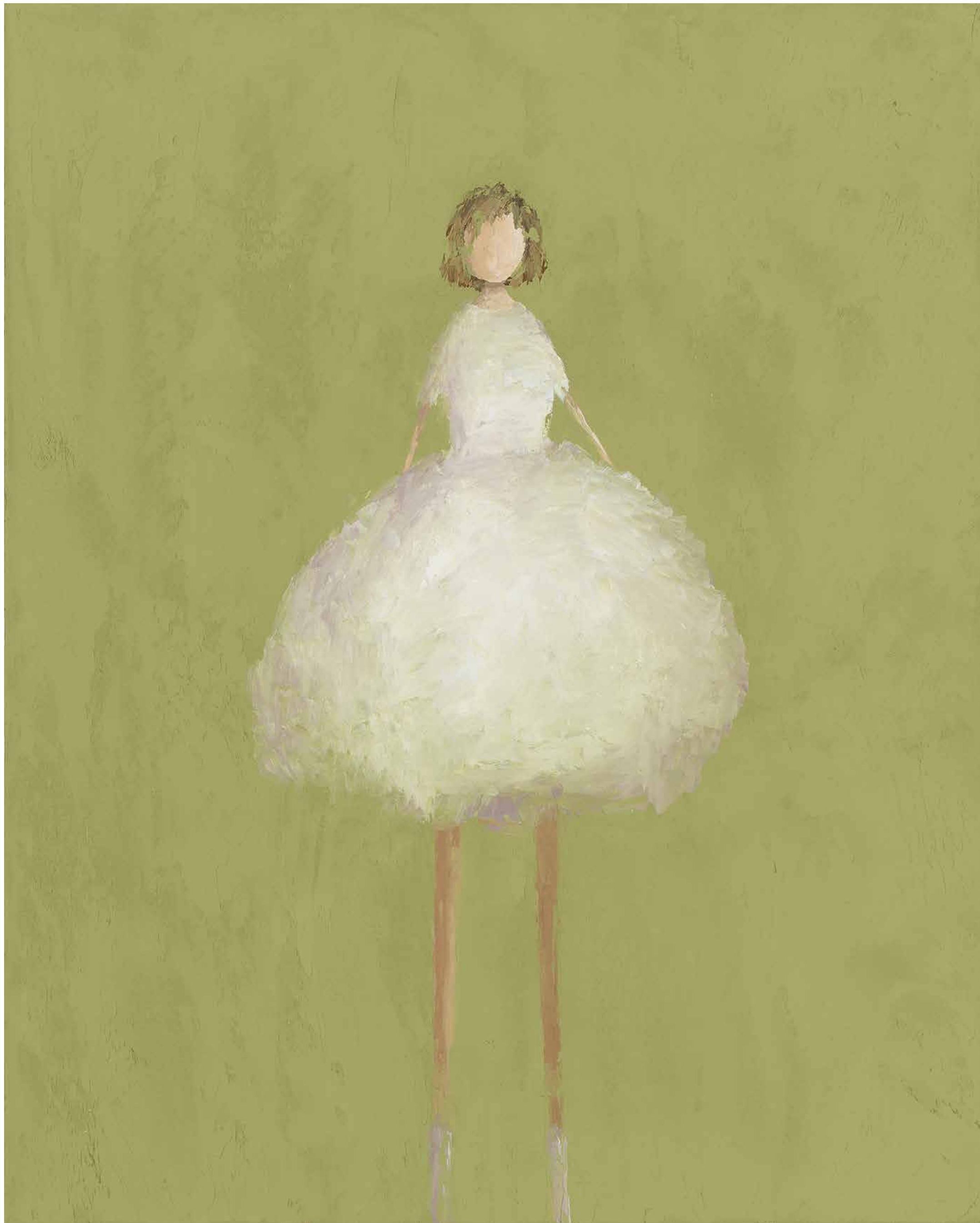
KASHA - 2022  
30 × 24 in - 76.2 × 61 cm  
Oil Painting



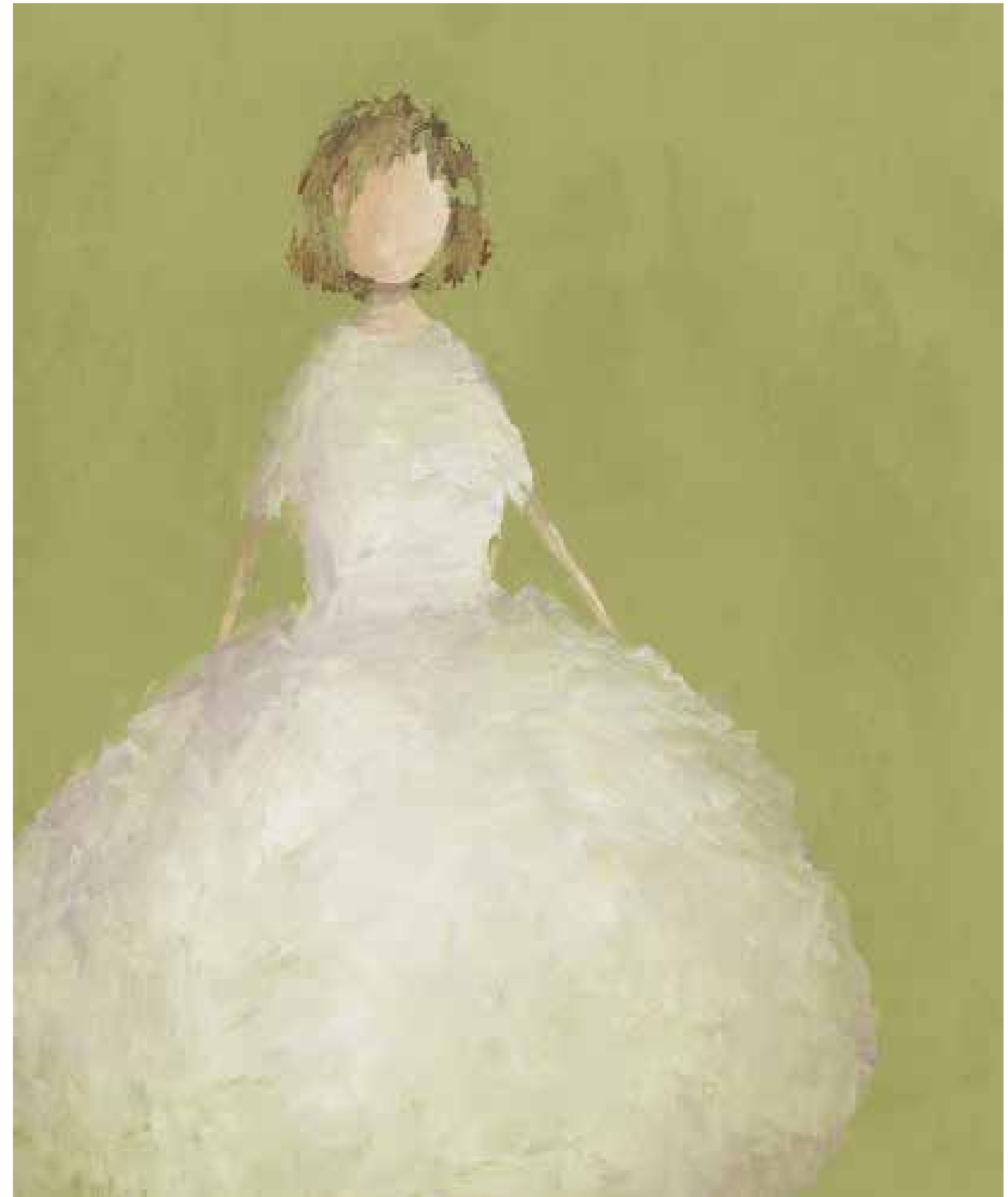


T I A N - 2022  
20 X 16 in - 50,8 X 40,6 cm  
Oil Painting



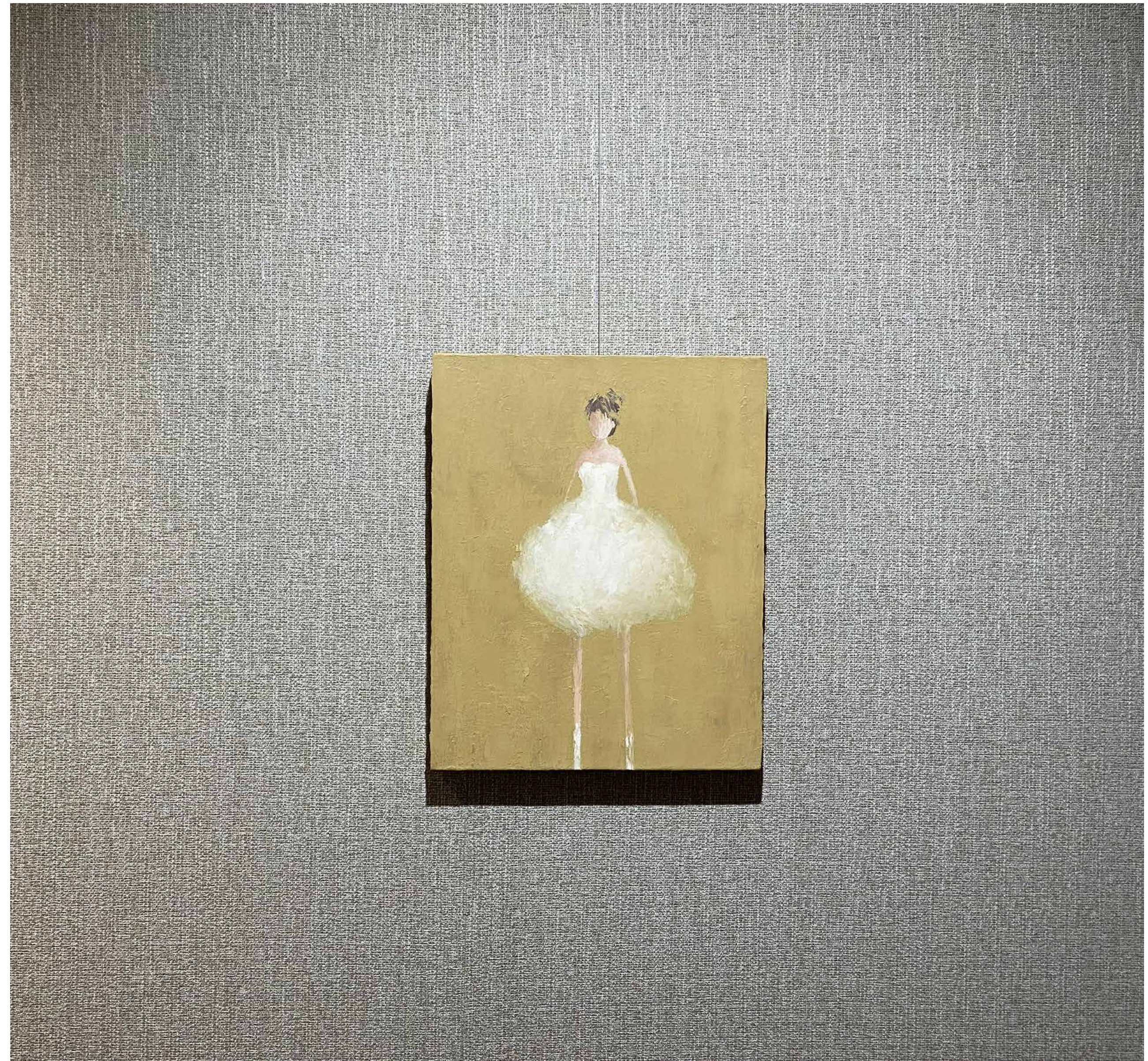


PAN - 2022  
30 × 24 in - 76.2 × 61 cm  
Oil Painting



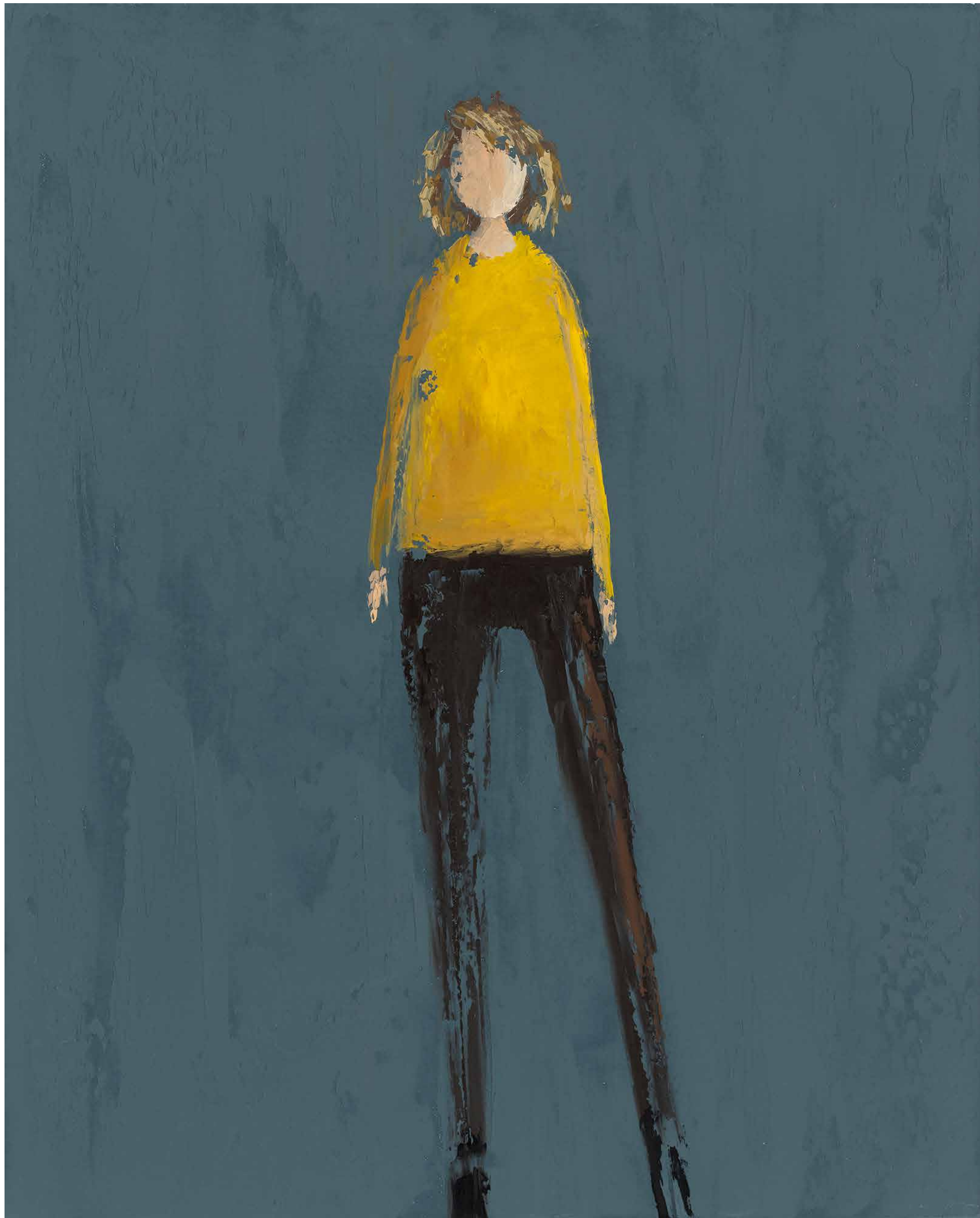
Detail - P A N





COMFREY - 2022  
20 X 16 in - 50,8 X 40,6 cm  
Oil Painting





ASHURA - 2022  
20 X 16 in -  
50,8 X 40,6 cm  
Oil Painting

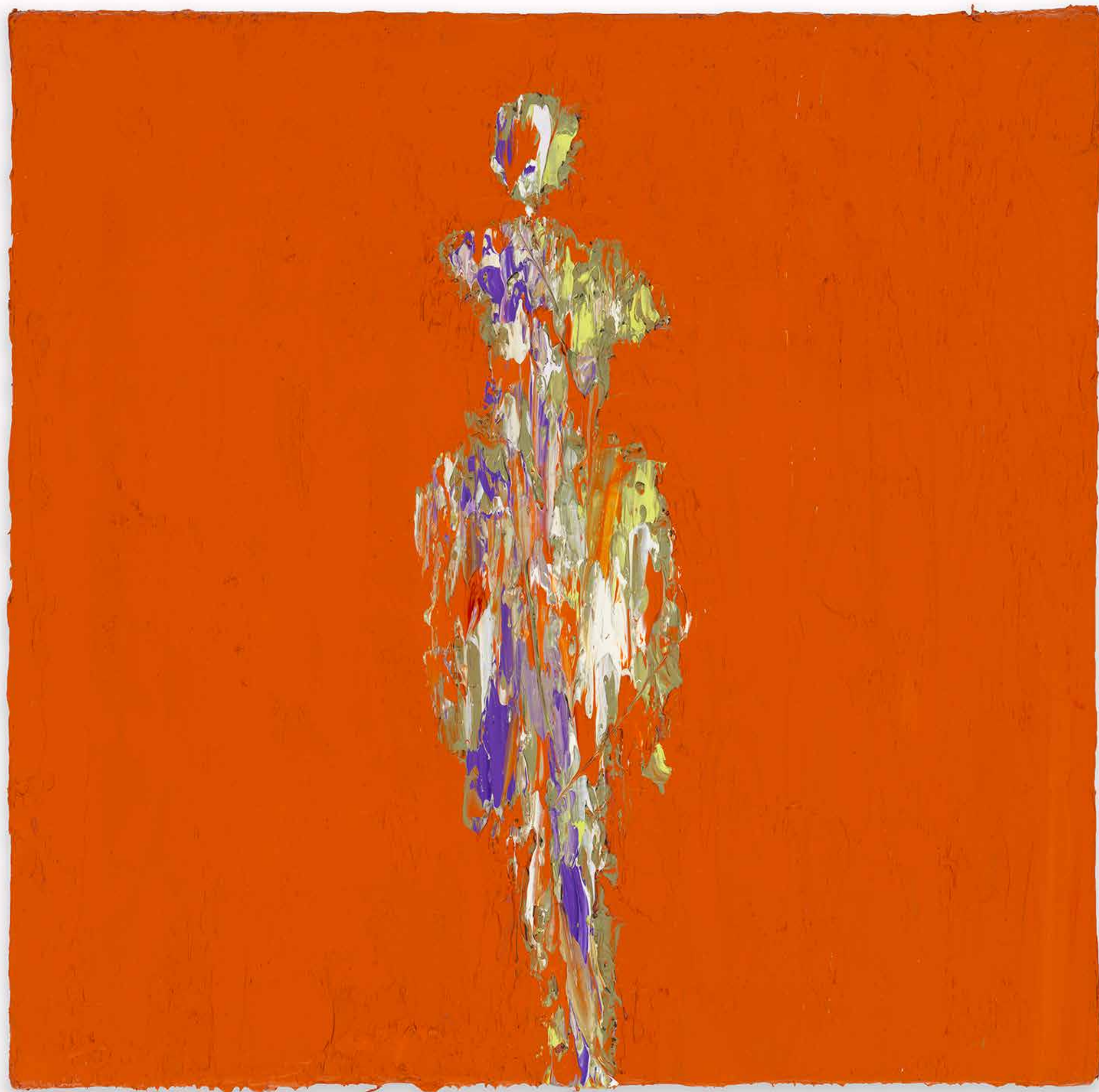






S I D A N A - 2022  
20 X 16 in - 50,8 X 40,6 cm  
Oil Painting





N A R E N - 2020  
12 × 12 in - 30.5 × 30.5 cm  
Oil on canvas

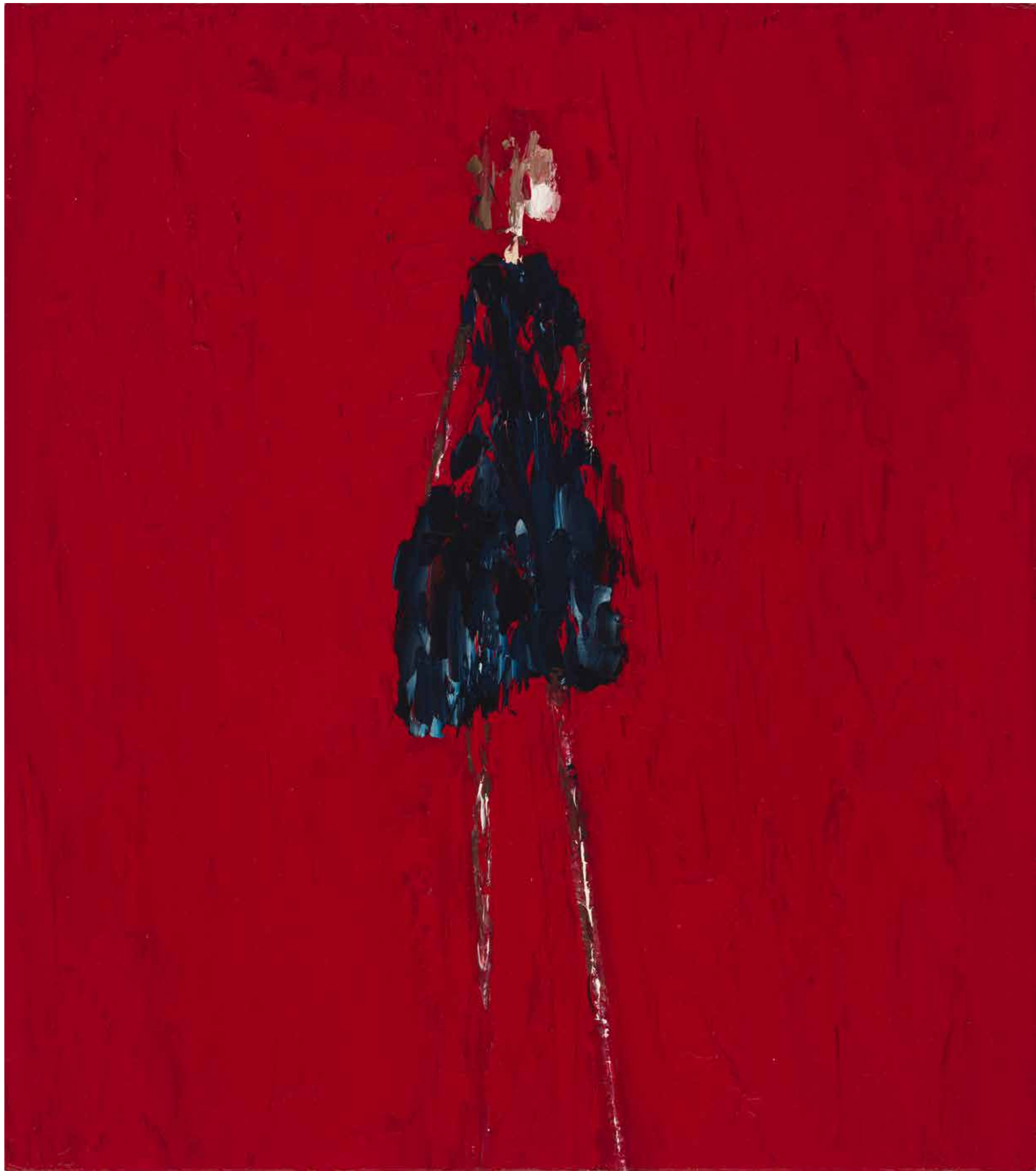




Detail - SYLVIE

SYLVIE - 2019  
29 9/10 × 29 9/10 in - 76 × 76 cm  
Oil on canvas





C H Y A N - 2019  
17 7/10 × 15 7/10 in - 45 × 40 cm  
Oil on canvas





B A B E - 2020  
5 9/10 × 5 9/10 in - 15 × 15 cm  
Oil on canvas

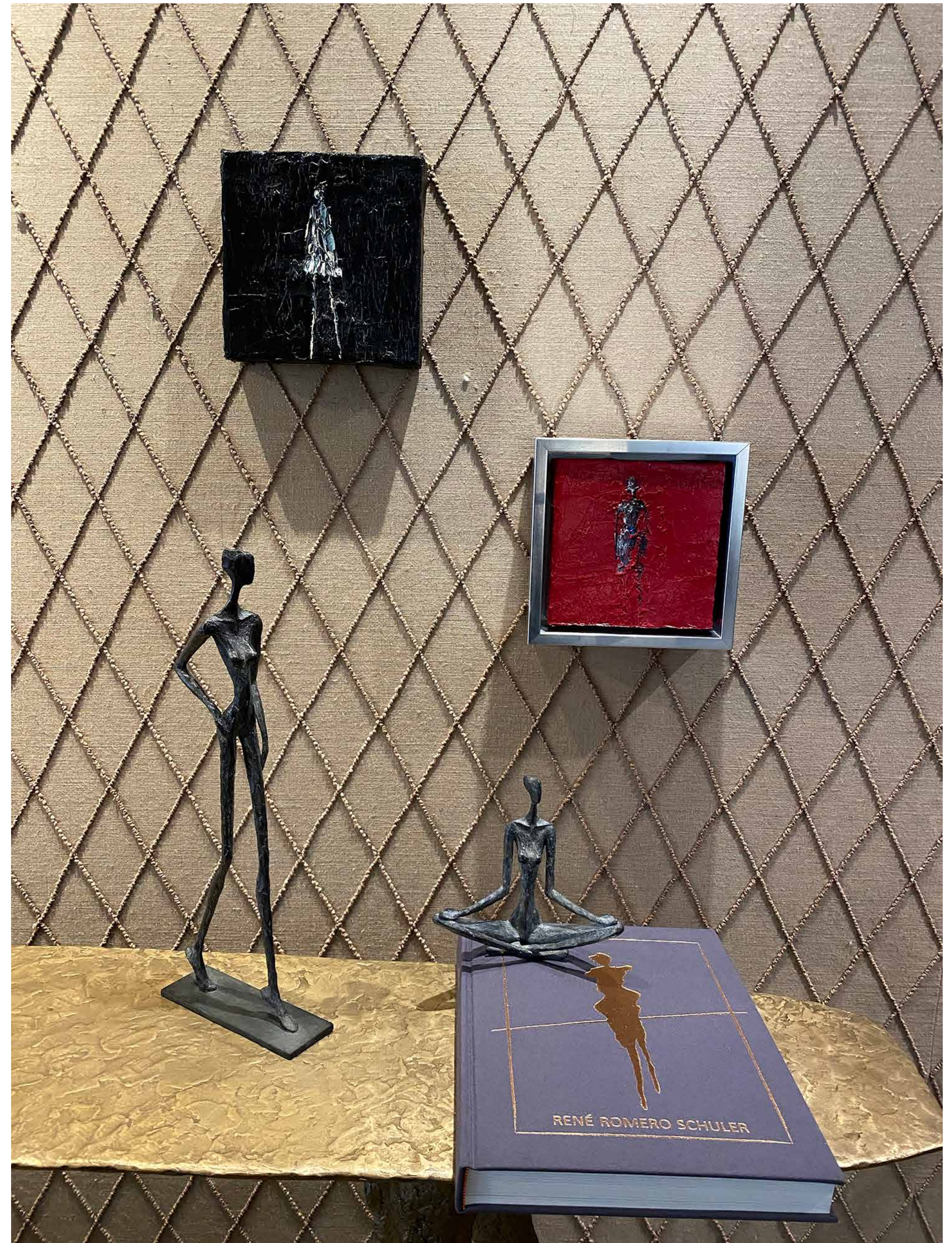


Detail - B A B E





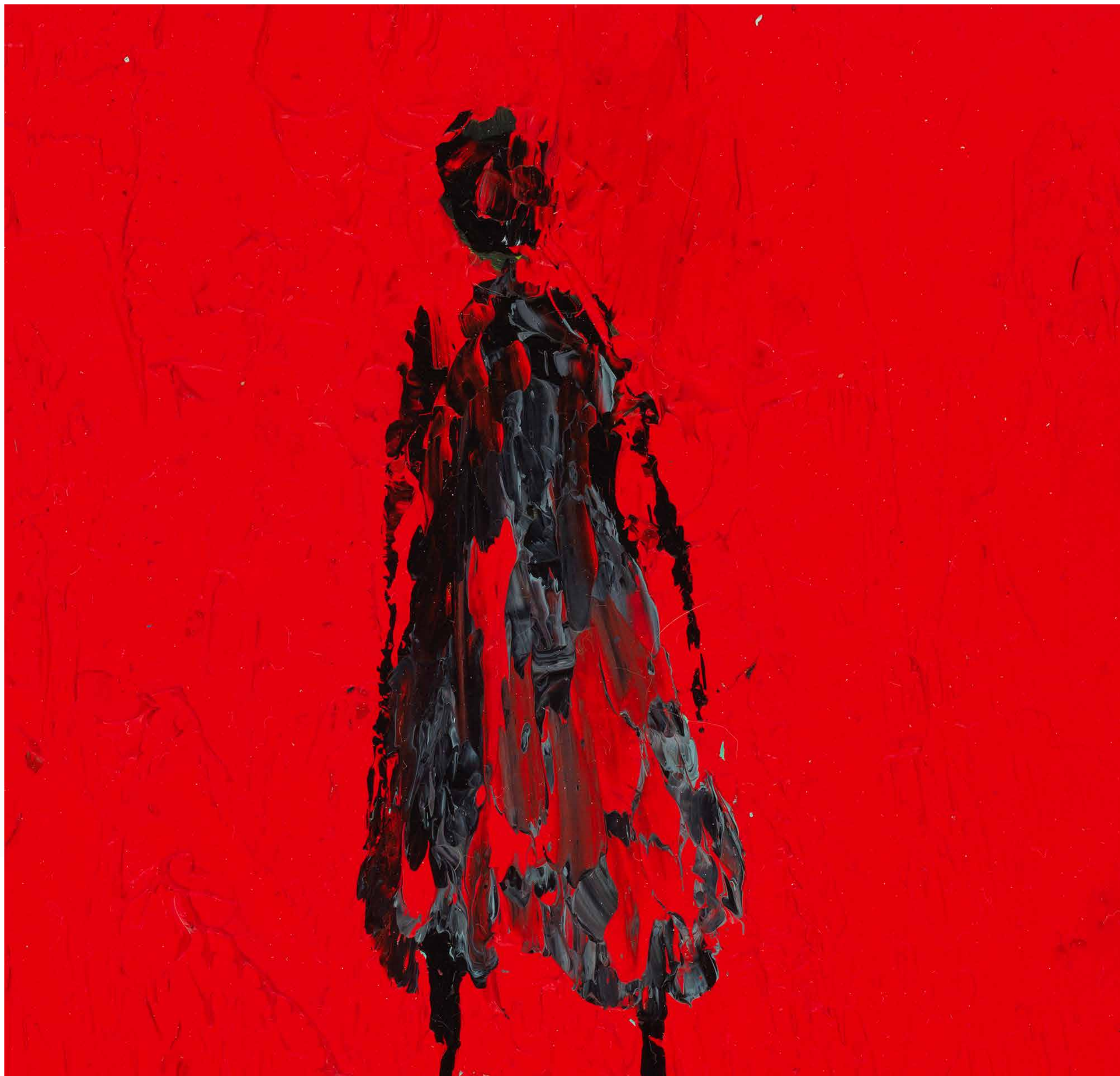
JENNIFER - 2019  
 6 × 6 in - 15.25 × 15.25 cm  
 Oil on canvas







SABINE - 2019  
17,75 x 17,75 cm - 6 7/10 × 6 7/10 in (Framed 22 x 22 cm)  
Oil on canvas



Detail - SABINE





F E E L - 2019  
 17,75 x 17,75 cm - 6 7/10 × 6 7/10 in (Framed 22 x 22 cm)  
 Oil on canvas and 24K Gold leaf



Q U I N N E - 2019  
 17,75 x 17,75 cm - 6 7/10 × 6 7/10 in (Framed 22 x 22 cm)  
 Oil on canvas and 24 K, white Gold leaf